

## DETONATION PROOF FLAME ARRESTER

### UFD TYPE FLAME ARRESTER



#### Benefits

- Meet USCG, IMO MSC/Circ,677 & EN 12874 requirements
- Designed for Detonation & Deflagration proof
- Maximum Capacity & Minimum Pressure drop
- Capability of Bi-directional flow
- Quick & Easy removable element
- Very easy cleaning & maintenance
- Available vertical & horizontal installation
- High quality corrosion & chemical resistance
- Capability of absorption of high shock pressure

### Introduction

The model UFD inline flame arrester is designed, manufactured and tested according to API 2000 and British Standard Specification Code BS 7244, EN 12874, USCG and IMO MSC/Circ,677.

The unit are passive devices with no moving parts.

The UFD detonation flame arresters provide protection against flame propagation in piping systems that are manifolded or have long runs.

The arresters are designed to stop an ignited flammable vapor mixture travelling at subsonic or supersonic vapor velocities.

They are also designed to protect against continuous burning against the 316LSS flame cell for a specific period.

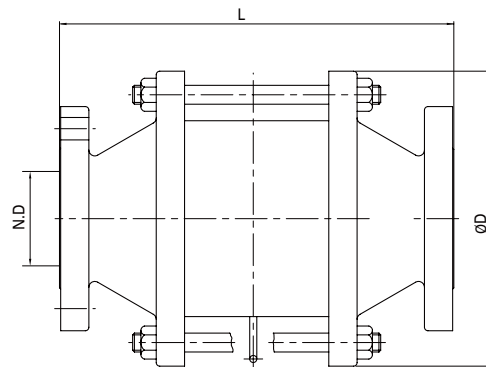
The standard flame cell is suitable for NEC group D or IEC IIA gases. Cells for other gas groups are available as additional extras.

The flame arresters are available with either carbon steel (epoxy coated), 304SS, or 316SS housing with 316LSS flame cells.

# FLAME ARRESTER Section 2.6

## DETONATION PROOF FLAME ARRESTER

### UFD TYPE FLAME ARRESTER



#### Dimension Table

Unit = mm

Size	2"	3"	4"	6"	8"	10"	12"	Other Size
N.D	50	80	100	150	200	250	300	Available on request
L	441	461	469	531	569	593	681	
ØD	220	250	285	385	450	600	680	

Note: Standard flanges is ANSI 150lb and other connections are available upon request.

#### Materials of Construction

	Standard Design	Special Design	
Body	C.I ( But S.S for KSFF)	C.S or Welded C.S	S.S & AL
Element Ring	C.S or S.S	C.S or S.S	S.S
Element	Aluminium or Stainless Steel		
Standard Coating	In-Out side Epoxy 250 Micron except for S.S & AL Part.		

Note : C.I - Cast Iron, S.S - Stainless Steel, C.S - Carbon Steel, AL - Aluminium