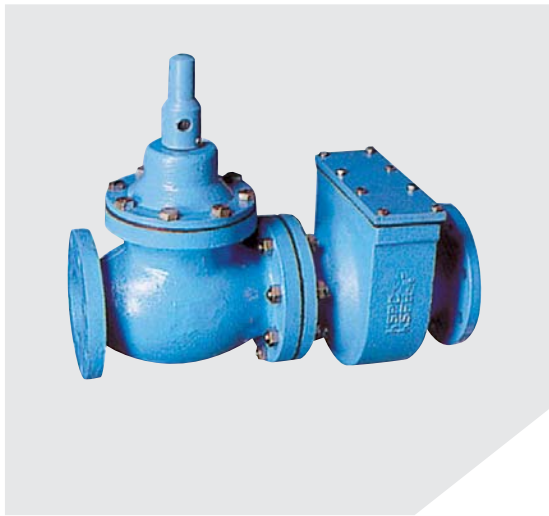


## FLAME ARRESTER Section 2.7

# EXPLOSION PROOF IN-LINE FLAME TRAP WITH FLAME ARRESTER

### KSFTFH TYPE FLAME TRAP WITH FLAME ARRESTER



#### Benefits

Flame Trap Ass'y of TOPSAFE makes no difference though it is installed in line of horizontality or perpendicularity.

fuse has an element which is made of metal, and to be melted easy, so it can intercept flame within 15seconds at 260 °F.(127 °C)

You can see the position of valve disc stem at outside though heat resisting plate glass, so you can confirm whether valve is opened.

Also, disassembly and cleaning of flame element is convenient and we can repair fast and it doesn't need disassembly to exchange.

#### ■ Introduction ■

KSFTFH type Flame Trap Ass'y of TOPSAFE is composed of Model KSFH Flame Arrester and quick closing valve, automatically, in according to a rise temperature of heat.

Generally, it's installed to pipe line in front of gas line from each gas holder and digester.

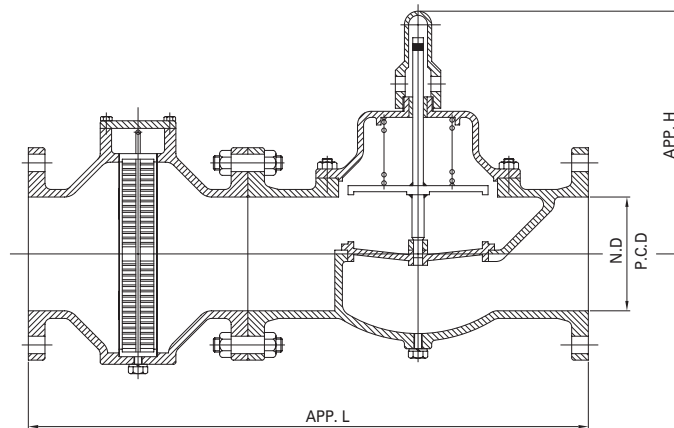
Also, it's prevent igniter to install in using gas equipment line.

Flame Trap is designed to protect as a from explosion of propagation of flame.

# FLAME ARRESTER Section 2.7

## EXPLOSION PROOF IN-LINE FLAME TRAP WITH FLAME ARRESTER

### KSFTFH TYPE FLAME TRAP WITH FLAME ARRESTER



#### Dimension Table

Unit = mm

Size	2"	2 1/2"	3"	4"	6"	8"	10"	12"	Other Size
N.D	50	65	80	100	150	200	250	300	Available on request
APP. H	185	200	210	320	376	370	420	524	
APP. L	455	470	150	560	700	830	960	1050	

Note: Standard connection: ANSI 150LB flange. JIS or different connections available on request.

#### Materials of Construction

	Standard Design		Special Design	
	Body	C.I	Welded C.S	S.S & AL
Cover	C.I	C.S	AL	
Element Ring	S.S	S.S	S.S	
Element	316L S.S			
Standard Coating	In-Out side Epoxy 250 Micron except for S.S & AL Part.			

Note : C.I - Cast Iron, S.S - Stainless Steel, C.S - Carbon Steel, AL - Aluminium